

# **Production Rider April 2023**

**Love Beyond (Act of Remembrance)  
By Ramesh Meyyappan**

## **Staging & Set:**

### **Stage Layout:**

Love Beyond (Act of Remembrance) This rider covers the “Full” version of the show, which is the version that tours nationally and fits into mid to large scale venues. The spec for international touring is detailed next to each item with a view to the venue supply the detailed items such as, costume rails, furniture, sound, and generic lighting. Items that Tour with the company, soft material for dressing the beds, tables and spaghetti hanging cloths, costumes and small hand props along with the practical's; LED lighting for the Lighthouse effect, Restaurant Table lights x4 and Middle Mirror frame light x1, the company can take in hand luggage. The Mirror Material, with fibre glass rods to be FedEx for example. Please ask the producer for more information on this.

**Love Beyond (Act of Remembrance) requires a stage (playing) footprint that has the following minimum requirements:**

**Width:** 7400mm

**Depth:** 6700mm

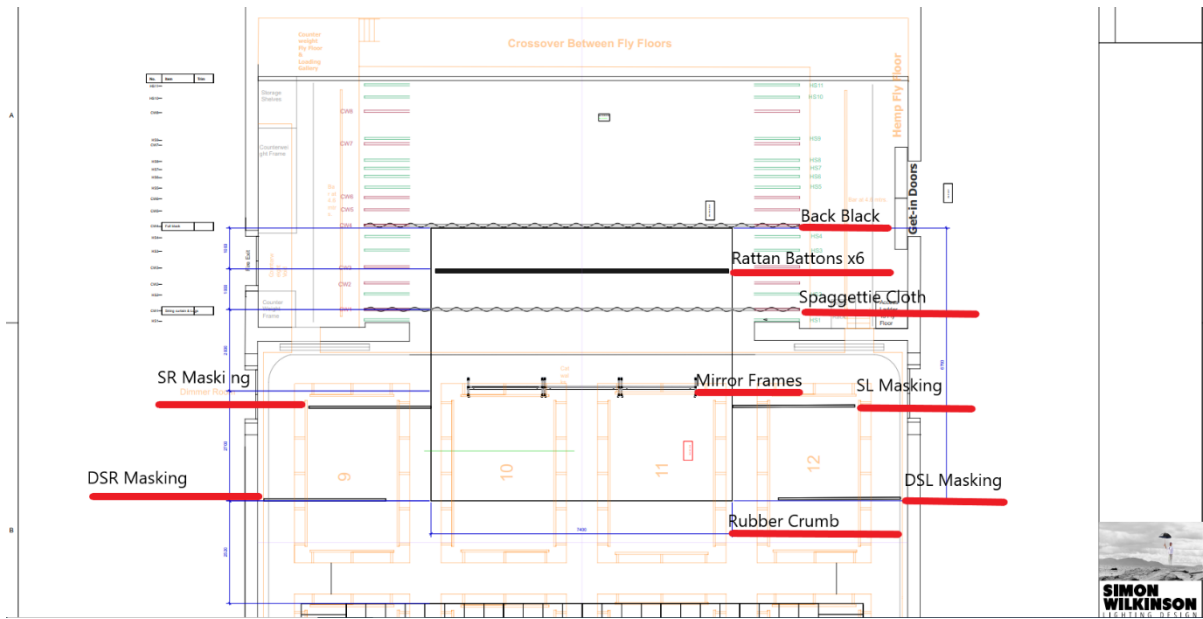
**Crossover:** not required

**Height to grid:** 6000mm

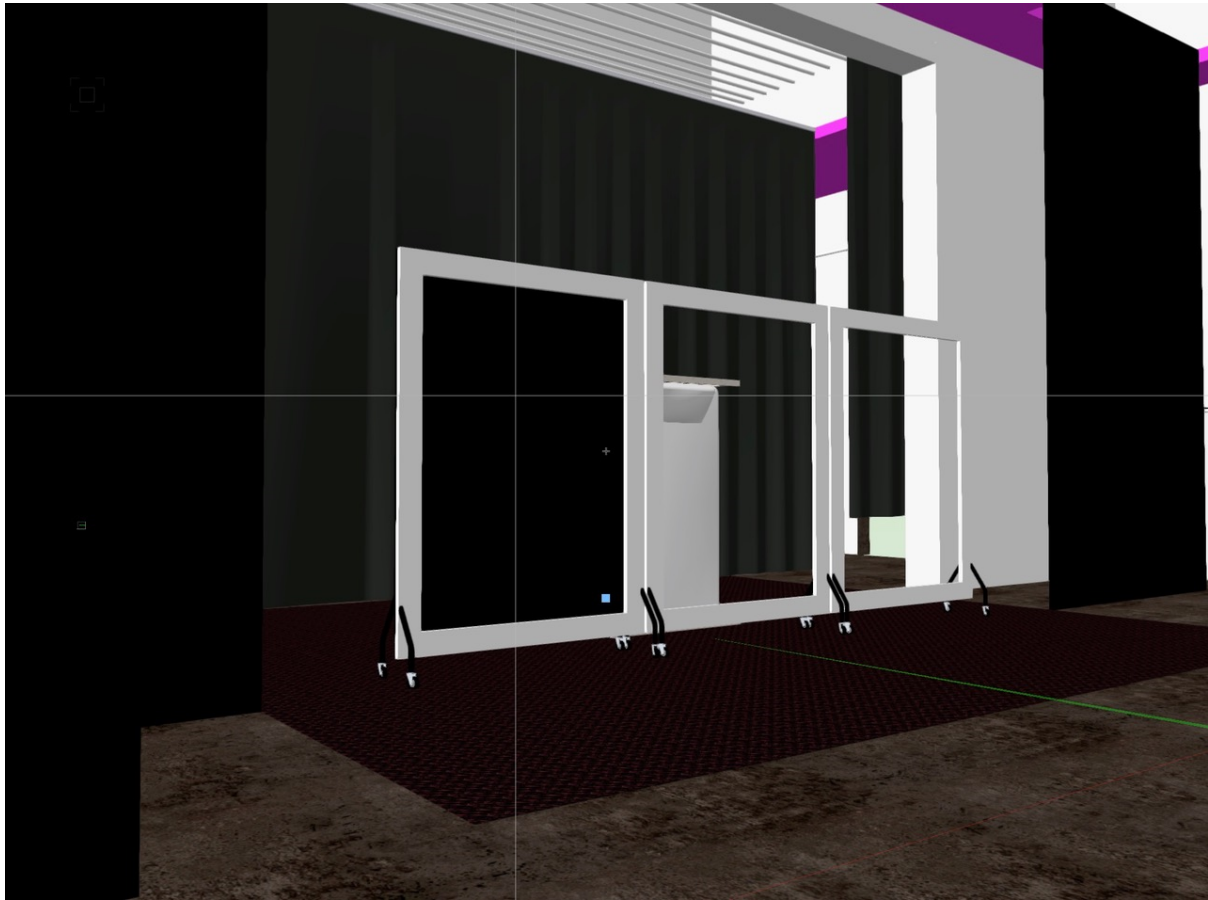
**Stage Layout:** Front on or Thrust

**Wing Space:** Approximately 2000mm Mid Stage Left & Stage Right

# Ground Plan Version A with notes:



### Front Row view of Set:



### Flown cloths:

#### **National & International Tour: Company provides.**

3 pieces Spaghetti Budget black each measuring: 600 cm H x 300 cm W - MultiWebbing on top 118,48811 355,46 Width: 300 cm (Item No.: 275506000007) 100% PES FR - Spec. weight: 245 g/m<sup>2</sup> – these are attached to a bar using thick black cable ties.

### Masking:

#### **National & International Tour: Venue provide.**

Mid stage soft masking to run to edge of three mirror frames as they stand in a line side by side across the mid stage area. The masking is to mask the side lighting on booms and the entrances and exits of the cast into the wing areas. The wing areas mid stage are used for storing props and furniture.

Down stage masking to make side lights – these are not used as entrances.

**Flooring:****National Tour: Company provides.****International Tour: Venue provide.**

Exhibition and Event Carpeting Company

EV-Black ECO Velour-Black 128.80 m<sup>2</sup> 4.00 515.20 \*2 cuts @ 16.1m x 4m

Required. Carpet to cover whole playing area and into the wings.

**Mirrors Frames:****National Tour: Company provides.****International Tour: Venue provide.**

3 x long costume rails

3 x short 45 cm short height extenders for costume rails (Can tour in hand luggage internationally)

3 x long 60 cm long height extenders for costume rails (Can tour in hand luggage internationally)

3 x wooden frame covers comprising of top, bottom, left and right side. Painted black. With long coach handles x6 and x6 small black handles on US edge for cast/ASM to mauver.

**Mirror Material:****Nationally & International Tour: Company provides.****Spec** Width: 225 cm - Spec. weight:70 g/m<sup>2</sup> Standard FR: BS 5867 part 2B - DIN 4102 / B1 Dimension 228 cm H x 163 cm W.

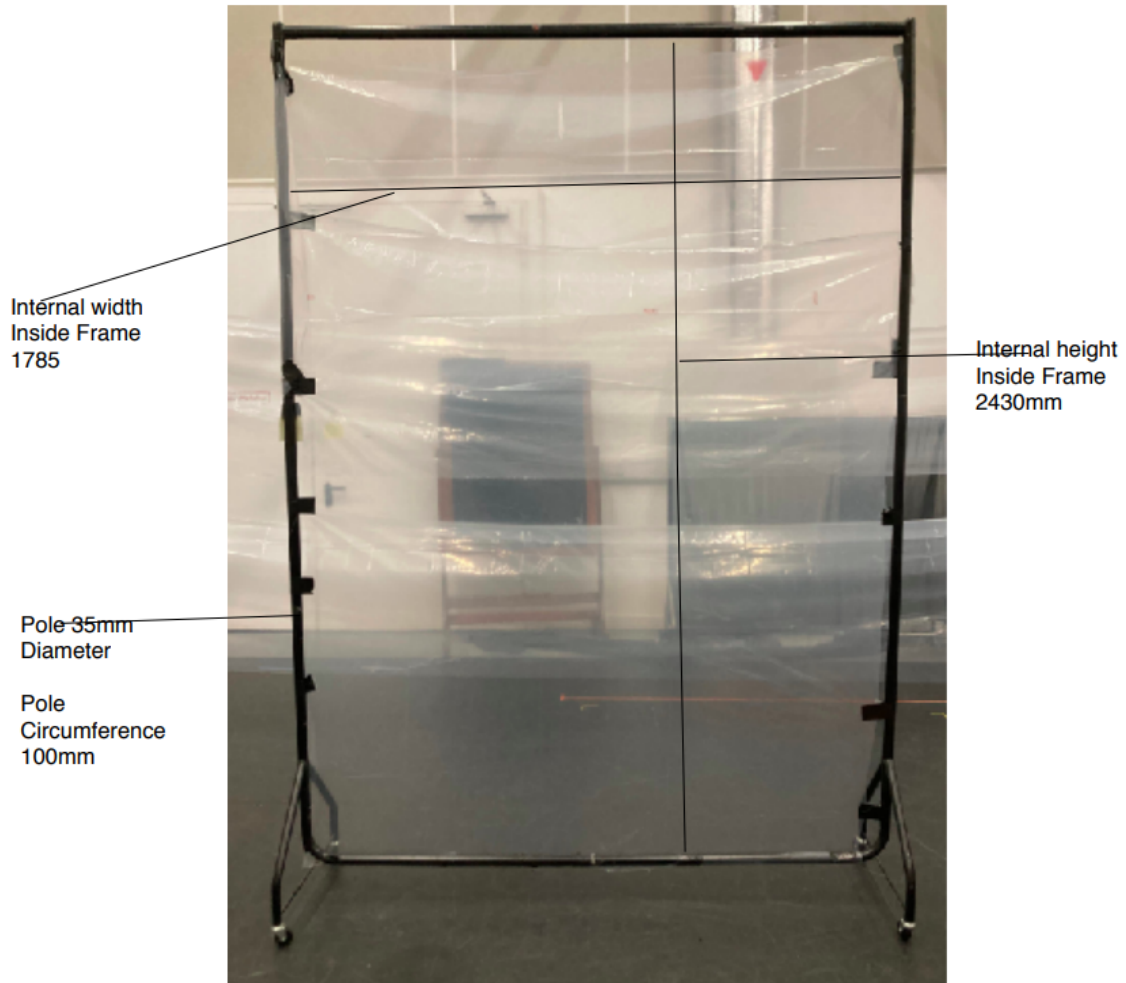
Finishing On all sides: glued pocket with rounded openings every 50 cm.

Stored in giant grey plastic tubing. Handle with care - Please wear gloves. There is 1 x spare Giant Mirror material that will tour with the show.

**Mirrors construction detail:**

Costume rails at 2500 (millimetres) high covered in 3 X Fabric Giant Mirror - 100% PES 1 626,99 Type Mirror foils with pocket all around Colour Transparent mirror silver with 4 x Glass fibre rod (14 mm wide x 3m long) for each pocket of the mirrors. Then stretched onto the costume rails with heavy duty black cable ties. Then wooden black painted frame covers attach to the rails and bolt at each corner.

### Costume Rail Dimensions



### **Rattan Batons x6:**

**National Tour: Company provides.**

**International Tour: Venue provide.**

Wooden painted black L shaped batons with Bamboo Rattan attached with thin black cable ties and painted black.

Dimensions: 1000H x 2000L (millimetres)

### **Set Dressing:**

**National & International Tour: Company provides.**

Thick Black line of Rubber Crumb on the DS front edge of the carpet.

## **Furniture:**

**National Tour: Company provides, apart from 1 x grey chair.**

**International Tour: Venue provide.**

All table dimensions: 75D x 75W x 75H (centimetres)

2 x Black painted wooden Table.

2 x Black painted wooden Table with swivel castors.

2 x Black painted wooden chairs with swivel castors.

2 x Black painted wooden chairs.

1 x Black wooden chair with leatherette seat and back. Black painted legs and arms.

1 x Black painted wooden Coat Stand

1 x Grey painted wooden tall Standard Lamp with grey shade

1 x Black plastic chair

1 x Grey plastic chair (venue to supply please)

1 x steel framed Hospital Bed with mattress on wheels

1 x Grey painted Hospital Overbed table with castors.

1 x Small back Medicine Cabinet with drawers on castors

## **Swimming Table:**

**National Tour: Company provides.**

**International Tour: Venue provide table, Company provides triple velvet material.**

Wooden table with Diamond shaped top with fixed castors covered in Tripple Black velvet material. Rope attached for pulling actor. Rope spec: Approx. 10mm Diameter. Round Strong Poly Cord String. Made from 100% UV Protected Polypropylene Yarn. Images of this in the production folder.

Table Dimentions:

90L x 44W x 80H (centimetres)

## **Floating Table:**

**National Tour: Company provides.**

**International Tour: Venue provide table, Company provides triple velvet material.**

Plastic framed table with hardwood top attached. Coverd in Tripple Black velvet material. Images of this in the production folder.

Table Dimentions:

85L x 42.5W x 90.5H (centimetres)

Top of Table size: 66 X 41.5 (centimetres)

## **Up Right Bed:**

**National Tour: Company provides.**

**International: Venue provide bed frame, step, and stage weight. Company provides bedding to dress bed.**

Wooden frame with small additional step for shorter actor. Standard stage weight to be added, venue to supply the stage weight please. Covered in bedding and pillow. Images of this in the production folder.

Bed Dimensions: 100H x 142W x 210D (centimetres).

### **Restaurant Table:**

**National Touring: Company provides.**

**International Touring: Venue provide table. Company provides tablecloths and practical lights.**

Black table with swivel castors covered with two white tablecloths and fitted with 4 x practical lights (see lighting for more details). Tabletops need to be able to have 4 x holes drilled in corners for practical's cabling to fit through.

Table Dimensions: 75D x 75W x 75H (centimetres)

### **Props:**

**National & International Tour: Company provides.**

1 x stone Cairn with wooden base covered in black material. (Stones in Cairn made with Caledonian Large Cobbles 80-120mm Premier Grade, Fully Rounded, Decorative Ponds)

1 x Portrait - wooden frame with picture and glass front

1 x Book – Care Home Welcome Pack

5 x Pebbles

1 x Wooden box – for Ashes

1 x pack of post-it notes

1 x First aid kit

1 x Box of latex gloves

1 x blue paper roll

2 x blue plates/cutlery set

1 x Fresh red rose bouquet

2 x Black umbrellas

2 x per show: Blood bag

1 x IV drip stand

1 x Ceramic Grey (painted) Urn with lid for Ashes.

1 x Grey hold-all bag containing PJ trousers.

1 x Grey blanket

1 x dinner menu

1 x Blue + white striped towel

### **Consumables:**

**National & International Tour: Company provides.**

Blue paper roll

Mashed potatoes and vegetarian sausages

Red roses

Disinfectant wipes  
Blood bags  
Latex gloves  
White play sand for Ashes.

**Costume:** Please see Production Folder for more information.  
**National & International Tour: Company provides.**

**Old Harry (Ramesh)**

Grey pants (various)  
White Vests  
Navy Blue socks plus 'comfort sock' option  
Slippers  
Pale grey/cream striped pyjamas  
Grey check slippers  
Grey Corduroy Trousers  
Pale Grey Shirt (plus spare)  
Grey Tie (plus spare)  
3 Cardigan options  
Grey slipon shoes  
Black Mac Overcoat  
Brown Fedora-style Hat  
Watch  
Wedding ring

**Young Harry (Rinkoo)**

Beige socks (plus brown spares)  
Cream shirt (plus spare)  
Burgundy Tie  
Brown/Burgundy suit  
Camel overcoat  
Camel Chelsea boots  
Brown fedora style hat  
Pale grey/cream striped pyjamas  
Grey check slippers  
Watch  
Healthcare top and trousers  
Black funeral coat  
Wedding ring

**May (Alicia)**

White long sleeve T-shirt  
Grey healthcare tunic with badge



Slate grey healthcare trousers with elastic waistband.  
Comfort socks  
Adidas trainers

**Elise (Amy)**

Blue/White swimsuit  
Seamless Pants  
Nude Tights  
Red dress  
Beige coat  
Beige shoes (plus spare)  
Jewellery bag with watch/ring options  
2 x Hair slides  
Grey healthcare tunic with badge and false sleeves  
Slate grey healthcare trousers.  
Comfort socks  
Grey primark trainers  
Black funeral coat

**Sound:**

**National & International: Venue provide.**

Please refer to the Sound Spec contained in the Production folder for more detail.

**Lighting**

**National & International Tour: Venue provide.**

The lighting design is fixed and requires space in the wings down stage and mid stage for side lighting on booms that is integral to the design and lighting of the Mirror frames. Sufficient time for focusing with the Mirror Frames should be factored into the fit-up schedule at the earliest possible opportunity. Please see the Generic Lighting Plan G in the production folder for more detail.

**Control:**

**National & International Tour: Venue provide.**

For Love Beyond was originally plotted on an ETC Eos series lighting desk, a suitable compatible console (Ion XE, Gio or Gio @5 preferred) must be provided by the promoter. In addition to the requirements of the attached plan, we require a spare DMX universe for toured wireless units.

If this is not available or cannot be sourced, then please contact the producer.

**Generic Units:**

**National & International Tour: Venue provide.**

We require the venue / promoter to provide all equipment necessary to achieve the attached lighting plan. This includes but is not limited to:

8no 3m booms with boom bases. Booms are visible to the audience and so must be

black finish.

28no 250/500mm boom arms (Doughty derig style) (at least 10 must be 500mm arms). Boom arms must be black finish.

8no ETC Source 4 19° profile

6no ETC Source 4 26° profile

8no ETC Source 4 36° profile

8no ETC Source 4 50° profile

17no Full Top Hat for ETC Source 4 fixed

4no Short Top Hat for ETC Source 4 fixed

9no 1kW Fresnel

8no Par 64 (CP62/MFL lamp)

5no High End SolaFrame 1000 UB

A minimum of 47 ways (excluding house lights) of high-quality DMX dimming.

Substitutions are possible but must be discussed with production prior to our arrival. Any substituted profile must be of a similar size and optical output to the Source 4 and must be suitable for boom use. The SolaFrames may be substituted by a theatrical moving profile spot with equivalent functionality. In particular, the framing shutter system on such a substitution must be full curtain, permitting a single shutter to fully obscure the beam.

### **Practical's:**

#### **National & International Tour: Company provides.**

The show tours with a number of wireless practical's:

A standard lamp with an array of LED pixels as a light source. This is powered by a 12V 6800mAh Safari Drive Lithium battery.

4no 3W LED spots mounted on a restaurant table. This is powered by 2no 5V Anker Astro E1 5200mAh Lithium battery,

2no 3W LED spots mounted behind one of the mirror frames. This is powered by 1no 5V Anker Astro E1 5200mAh Lithium battery.

Wireless LED control is supplied via a 2.4GHz wireless network. We will supply all the elements of this system but require a DMX input from your desk to our wireless transmitter. The wireless units should be on their own universe, and so this DMX input should only carry data for these units.

The batteries for these practical's will require charging within the venue between performances.

### **Venue Staff/Additional Crew:**

LB tour with a Sound Supervisor/Operator. One SM on The Book, one ASM on stage and an LX Supervisor/Operator. It is assumed that the venue will supply a minimum of one duty stage and one duty electrics staff member for the get in and out days.

We require two extra crew on top of this for the get Out, this would be 2 x venue Lx/Sound 2 x crew please. Any extra crew must be negotiated beforehand with the Producer and any additional fees agreed before employing extra staff. It is assumed duty staff can cover both LX & Sound duties.

During technical run through and show calls we require one duty technician on stage with scene change responsibilities during the performance and one other duty technician. A schedule will be sent out prior to arrival at the venue and in good time. The times listed below are an estimate only to give an indication of our general get-in schedule.

## Generic Schedule:

### Get in Day:

<b>Time</b>	<b>Action</b>
10.15 - 11.15	Rigg Lighting overhead/Spaghetti hang/on stage speaker rig
11.15 - 12.15	Carpet Down once overhead lighting rigging finished
12.00 - 13.00	Sound Lunch break
12.15 - 13.00	Carpet down complete, Build Mirror frames (give one to LX for focus as soon as built)
13.00 - 14.00	Lunch Break for rest of team & Sound subs rigging time
14.00 - 15.00	Rigg lighting booms in place on stage
15.00 - 17.00	Lighting Focus & SM/PM Set out furniture and props
17.00 - 18.00	Dinner Break
18.00 - 19.00	Continue Lighting Focus/Sound time on stage
18.00.	Director and Cast notes
19.00 - 20.45	Continue Lighting Focus/Sound time on stage
20.45 - 21.45	Cast time on stage to orientate
21.45.	Day Ends

### Performance Day:

<b>Time</b>	<b>Action</b>
13.00.	Tech Time on Stage
14.00 - 15.00	Lunch Break
15.30 - 17.00	Tech/Dress Run of Show
17.00 - 18.00	Dinner Break
18.00.	
19.30 - 20.30	Performance
21.45.	Day Ends

During the shows we require a duty technician to cue the cast on stage. They will be cued by our SM on The Book via comms. All subsequent calls will be show calls i.e. 6pm to 10pm.

It is estimated that the Get Out will take a maximum of approx. 4 hours (dependant on load out location and accessibility). Crew scheduling will vary from venue to venue and all crewing considerations, above and beyond that negotiated in the contract, must be agreed in advance between the venue Technical/Production and Raw Material Arts.

## **Transport & Parking:**

**National Tour:** Full show fits in a high-top Box Luton Van.

**International Tour:** The Mirror Material tubes x 4 to be FedEx for example. The spaghetti cloths, dressing for 2 beds, triple black velvet material, rope for Swimming table, costume, small hand props all fit in Extra-large suitcases: (Spinner 80 (Extra Large Case: > Two Week Travel): 47 x 29 x 80 cm - 92 L - 3,60 kg) and travel with the company.

## **Stage Management & Company Care Comms/Cans:**

LB require wireless comms at the following positions:

Lighting

Sound

Stage Left and Right Wings.

## **Dressing Rooms:**

**2 Dressing Rooms are required.**

Dressing Room 1: 2x Female

Dressing Room 2: 2x Male

## **Laundry facilities should include:**

Washing Machine

Dryer

Iron & Ironing Board

## **Health & Safety:**

It is expected that emergency procedures be relayed to the company when they arrive by a member of the venue management team. This includes any CDM requirements by the venue. Hard Hats and high visibility garments are to be provided by the venue. Steep toe capped boots are to be provided by Raw Material staff. First Aid The company tours a limited First Aid Kit, though the venue should provide ice packs and basic first aid supplies.

Drinking water should be available as close to the stage as possible to reduce the risk of dehydration. Refreshments Tea and Coffee should be provided by the Promotor/Venue for the company, either in a Green Room or by the use of a vending machine. Facilities for boiling water should also be provided.

Risk Assessment Detailed Method Statements can be found in the production folder.